

2803/205
CLOTHING CONSTRUCTION II
PRACTICAL
Oct./Nov. 2017
Time: 6 hours



THE KENYA NATIONAL EXAMINATIONS COUNCIL

DIPLOMA IN FASHION DESIGN AND CLOTHING TECHNOLOGY

MODULE II

CLOTHING CONSTRUCTION II PRACTICAL

6 hours

INSTRUCTIONS TO CANDIDATES

1. You should have the following items for this examination:
 - (i) plain light weight fabric $1\frac{1}{4}$ metres long by 114 cm wide;
 - (ii) adhesive interfacing 45 cm by 50 cm;
 - (iii) **one** button 1.5 cm diameter without a shank;
 - (iv) thread to match the fabric;
 - (v) brown papers;
 - (vi) one large envelope;
 - (vii) sewing tools.

2. At the end of the examination:
 - (a) stick on a label bearing your name and index number on a single layer of fabric without concealing any details;
 - (b) enclose the garment in the large envelope provided.

This paper consists of 2 printed pages.

Candidates should check the question paper to ascertain that both pages are printed as indicated as that no questions are missing.

25 TASKS

Using the measurements and the materials provided, cut out and make the garment style sketched below as follows:

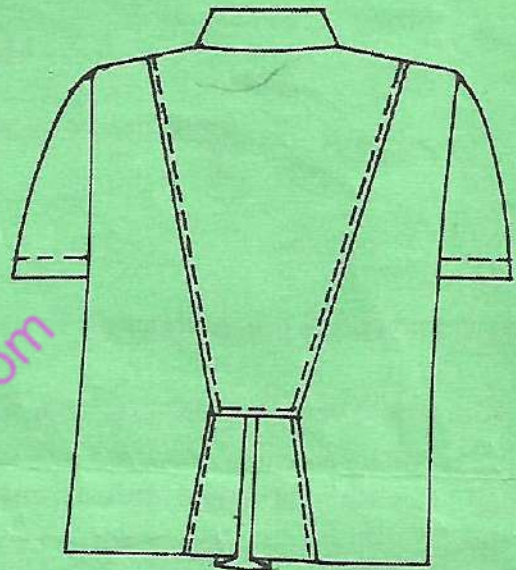
- (i) use French seams at the shoulders, sides and underarms;
- (ii) make **one** handworked buttonhole at the break point and sew on the button;
- (iii) hand hem the garment.

NB: Use separate facings at the front.

Bust/Chest - 28"
 Across back - 11"
 Shoulder - 3"
 Hape to waist - 9"
 Shirt length - 13"
 Yoke depth - 4"
 Sleeve length - 5"
 round Arm - 11"



FRONT VIEW



BACK VIEW

Measurements

Bust	-	75 cm	15.5	Sleeve length	-	19 cm
Across back	-	30.8 cm		Top arm	-	27 cm
Scye depth	-	18 cm		Full length	-	50 cm
Neck size	-	33 cm		Pleat depth	-	3 cm
Shoulder	-	11 cm				
Waist	-	63 cm				
Back neck to waist	-	33.8 cm				
Waist to hip	-	16.8 cm				

THIS IS THE LAST PRINTED PAGE.

Handwritten calculations and notes:

- 13.4
- 20.8
- 2
- 1
- 15.4
- 30.8
- 2
- 1.7
- 15.4
- 2
- 29.5
- 4
- 18.5
- 75
- 12.5
- 35
- 22
- 30
- 75
- 4
- 75
- 4
- 18.6
- 4
- 63
- 4